

# Spring Harbor News

June 2012

A publication of the Spring Harbor Neighborhood Association

Serving the area from Shorewood to Middleton and Lake Mendota to Old Middleton Road.

[www.SpringHarborOnline.com](http://www.SpringHarborOnline.com)



## Neighborhood Welcome

Summer is upon us and our little corner of the globe is already starting to look a lot different. Between University Ave reconstruction and the new University Crossing development, we're certainly moving a lot of dirt around. Big thanks to our neighbors and the government workers who have been vigilant in making sure both projects are maintaining ample runoff protections and respecting our neighborhood's unique public spaces. Be sure to take advantage of the wonderful weather by enjoying our neighborhood parks and right of way areas:

- Spring Harbor Park
- Boat Launch and Beach
- Kettle Pond Conservation Park
- Indian Hills Park
- Merrill Spring Park \*\*
- Lakeshore Courts

\*\* As you may be aware, the City of Madison just purchased an expansion to Merrill Spring Park. We are having a very important public input meeting Tuesday, June 26th, 6:30PM, at Dale Heights Church. There have been a lot of ideas floated around by the City and neighbors that would dramatically change the character of Merrill Springs Park, such as turning the existing cabin into a rental income property, installing kayak racks, fire pit, parking spots, et cetera. Do we want these changes? What changes do we want? This is our chance to tell the City.

## Newsletter Thanks

SHNA would like to give a long overdue and huge thanks to our various newsletter volunteers. A lot of work goes into this newsletter and we have a lot of houses to deliver to but with everybody's help the work is manageable. Our thanks to our authors and advertisers, to our proofreaders, to our newsletter editor, Liz Freitick, who always compiles and prints the newsletter without delay,

and to the various volunteers who deliver the newsletters in a timely manner. Big thanks, we all appreciate your hard work. You all do your jobs very well and keep us informed.

**Join the July 4th Parade and Picnic** (see page 4)

## Record Sale for Indian Hills Garden Club!



Thanks to all of you who came and bought plants at our garden club's annual sale held this year on Saturday, May 19. Your support is crucial to our success. We raised nearly \$2,500, a record for us, selling perennial plants dug up from our gardens.

Our expenses totaled only around \$30, so nearly all the money raised is available to allocate to local park projects in partnership with the City during the coming year. We also expect to use a portion of our proceeds to continue our support of non-profit, garden-related entities, such as Olbrich Gardens, Allen Gardens, and the Lakeshore Preserve. Nothing went to waste: plants that remained unsold at the end of the day were donated to Spring Harbor Middle School students who planted them in the school gardens. Unsold native plants are being planted in Spring Harbor Park by garden club members. A big thank you to all the people who helped us make the sale a success!

## Support Local Businesses!

As all of you have experienced, traveling on University Avenue in the midst of construction isn't easy. The construction makes it difficult for our businesses on University Avenue to attract customers. Our businesses are important to the vitality of our neighborhood. Please make an effort to support as many of the businesses as you can; your monetary support is appreciated this summer and fall.

## SHNA Board of Directors' Meetings

You are welcome to attend the monthly SHNA Board of Directors' meeting, currently held on the 2nd Tuesday of each month at 7:00 p.m. If you are interested in attending a meeting, be sure to check the SHNA website at [www.SpringHarborOnline.com](http://www.SpringHarborOnline.com) to confirm the date, time and place. If you would like to have an issue considered by the board, please contact your area director or the SHNA president to have it added to the agenda for that meeting.

### SHNA Board of Directors

President	Gregg Hull	443-9169
President Elect	Vacant	
Treasurer	Bill Fitzpatrick	233-3584
Secretary	Mary Beth Dunning	238-4598
Past President	Janet Loewi	238-2626

### Area Directors

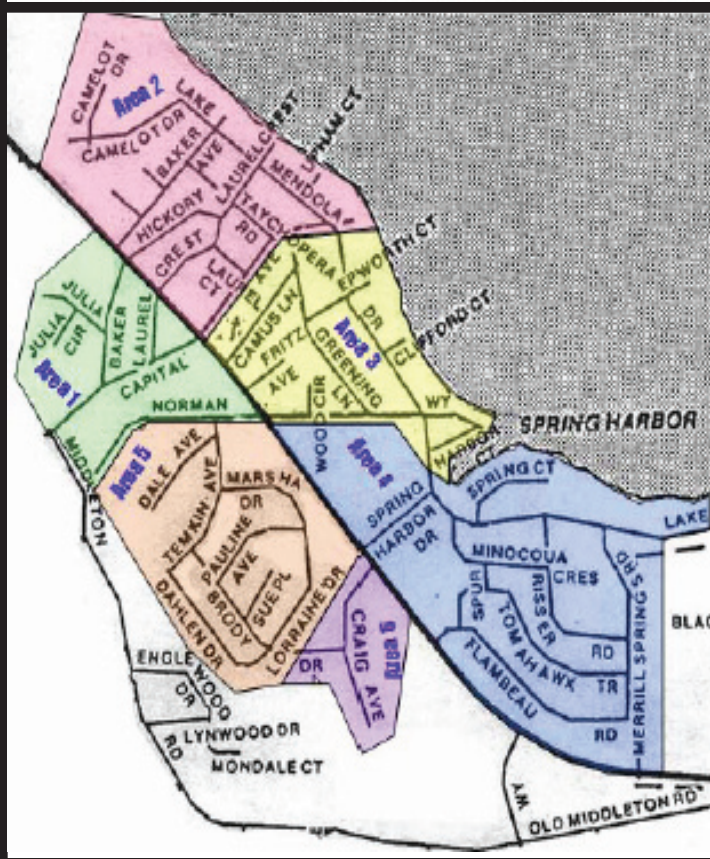
Area 1	Shary Bisgard	233-1238
Area 2	Jeff Schneider	320-0531
Area 3	Jeanette Tierney	238-9084
Area 4	Kim McBride	238-8819
Area 5	Barbara Schultz-Becker	232-1810
Area 6	Stan Fuka	236-4229

## Spring Harbor Watch Committee Update

We have the official word. The Spring Harbor Neighborhood Association has received a \$5,000 grant to survey the neighborhood to establish a base for further community program development. Currently, we are in the process of hiring a facilitator to administer the grant. This person would make recommendations for the survey, train and hire surveyors, analyze the data collected and conduct community meetings to create an action plan. The grant includes a stipend to hire several surveyors. We also need to have 250 hours of volunteer time. Please contact Barb Schultz-Becker, if you would like to be part of the surveying process. You may also email, if you would like to be updated about upcoming meetings and events at [jhbbsb@gmail.com](mailto:jhbbsb@gmail.com).

In the past year, we have had several incidents of burglars cutting window screens to access homes at night while the residents are home. The pattern seems to involve one to two individuals entering a home with flashlights and another person ready to pick them up in a vehicle parked in the vicinity. If you keep your windows open, install window locks. Motion detection lights have also been helpful to alert homeowners of burglars. If you see the light of a flashlight in a yard or driveway at night, be suspicious. There have also been reports of individuals peeking into windows apparently assessing the contents of properties. Unlocked vehicles have also been targeted for theft.

Please report any suspicious activities to the police dispatcher at 911. We need to make this a neighborhood where these activities are not tolerated. If you do experience a theft or break-in, report it to the police. In this way we can track occurrences of crime and have police resources allocated to both deter and apprehend the perpetrators.



# Your Neighborhood

## Indian Hills Garden Club

Despite its historical name, the garden club is open to everyone in the neighborhood. You don't have to be a "good" gardener to join. In fact, you may not garden at all but want to learn how or just have an interest in plants. And it's a good way to meet others in the neighborhood with a common interest and be enriched by attending our educational programs and tours.

Our activities include presentations by gardening experts, field trips, neighborhood planting projects, the annual plant sale, a spring garlic mustard pull, an April potluck at Dale Heights Church, and a winter holiday auction party. Our fund raising efforts benefit our neighborhood parks and annual contributions to garden and conservation groups. If you're interested in joining us, contact Kim McBride at 238-8819 or Shary Bisgard at 233-1238.

## Borrow a Weed Wrench

The Indian Hills Garden Club has purchased two Weed Wrenches for neighborhood residents to use to remove invasive trees and shrubs from their property. The smaller wrench will remove plants with main stems up to one inch diameter. The other will pull stems up to two inches. Directions for use are included. Both are easy to use and very effective. If you'd like to borrow one of these tools, please contact Rita Harris at 238-9169 or rharris9169@charter.net

## Clean Up and Garlic Mustard Pull Events

April 14 was our annual SHNA clean-up day. Thanks to the volunteers: Faith and Bill Fitzpatrick, Karen LaValley, Jim Gern, Kim McBride, and Spring Harbor Middle School students: Stephanie Benton, Kiran Arora and Meg Fitzpatrick.

Helping out in the annual garlic mustard pull were: Kathy Anderson, Mark Schultz, Jim Gern, Faith Fitzpatrick, and Kim McBride.

Teachers from Playful Kids Learning Center devoted a portion of their inservice day later that week to pulling garlic mustard in Kettle Pond Conservation Park. Thanks so much to Telo Anderson, Bekah Barrales, Jeremy Benash, Mary Eggert, Alicia Haubrich, Samantha Hentges, Karen McNutt, Jess Martin, Lydia Muehrer, Emily Oertel, Nikki Owen, Abbey Turner and Connie Varsho, who filled 13 large trash bags! Way to go!

Others, such as Mark Miller and Judy Schwamle, pulled the plants up when they had time to do so. They (and you, if you've picked up trash or pulled garlic mustard) are all to be applauded for doing so much toward keeping our neighborhood a terrific place to live!

Introducing the newly launched:  
[www.SpringHarborRealty.com](http://www.SpringHarborRealty.com)

Dear Neighbors,

We live in Madison's most beautiful neighborhood. As a long time resident and advocate for our neighborhood, I have the market knowledge to make buyers understand what makes Spring Harbor great. If you are thinking of selling, we would hate to lose you, but I am your best option! Call 443-9169 for a FREE preview and market assessment or visit [www.SpringHarborRealty.com](http://www.SpringHarborRealty.com) for the most accurate market data in our area.

Have a nice day,

Greg Hull, Realtor®  
(608)443-9169  
[greg@gmhull.com](mailto:greg@gmhull.com)  
[www.SpringHarborRealty.com](http://www.SpringHarborRealty.com)



Keep tabs on our neighborhood with the Spring Harbor search feature!



**Know of somebody looking to buy?** If you refer a friend or buy a home with me I will buy you a membership to the Spring Harbor Neighborhood Association every year for five years!





## Join the 4th of July Picnic and Parade

Will it be your first 4th of July in the Spring Harbor Neighborhood or your 54th celebration in Spring Harbor Park? In either case, you are invited to join your neighbors at the park for our annual parade and picnic. Kids with decorated bikes, trikes, and wagons should gather on Wednesday, July 4th, near the corner of Tomahawk Trail and Merrill Springs Road. The parade begins at 11:00 and heads toward the park for games and prizes for everyone.

A potluck picnic begins at noon. SHNA provides popsicles, pizza, brats, hot dogs, and orange drink. Neighbors are asked to bring a dish to pass and your own plates, drinks, utensils, and blankets or chairs. This year some of our long time volunteers will be out of town so we need a few more people to help. Please help with a small task like picking up donated food, decorating in the park, or helping with the games.

Please contact Barb Schultz Becker at 232-1810 or [jbbsb@juno.com](mailto:jbbsb@juno.com), or Ann Sowaske at [bsowaske@sbcglobal.net](mailto:bsowaske@sbcglobal.net). Thank you and we look forward to seeing you on the 4th!



**Dale Heights Presbyterian Church & Korean Madison Sah-lang Church**  
**5501 University Avenue** (next to Brennans)  
**Madison, WI 53705**

<p><b><u>Dale Heights</u></b>  <b>Pastor Marilyn Gamm</b>  <b>Phone: 608-233-0134</b>  <b>e-mail: <a href="mailto:dalehghts@sbcglobal.net">dalehghts@sbcglobal.net</a></b>  <b><a href="http://www.daleheightspc.org">www.daleheightspc.org</a></b></p>	<p><b><u>Sah-lang</u></b>  <b>Pastor Ki Tak Gam</b>  <b>Phone: 608-395-4205</b>  <b>e-mail: <a href="mailto:madison.sarang@gmail.com">madison.sarang@gmail.com</a></b>  <b><a href="http://www.madisonsarang.org">www.madisonsarang.org</a></b></p>
<p><b>Sunday Children-Friendly Worship</b>  <b>10 a.m.</b>  <b>Sunday Church School 9 a.m.—</b>  <b>September-May</b>  <b>Wednesday Lunch Studies—</b>  <b>for more information see website</b></p>	<p><b>Sunday Worship 12:10 &amp; 1:30 p.m.</b>  <b>Wednesday Worship 7 p.m.</b>  <b>Morning Prayer 6 a.m. Mon.-Fri.</b>  <b>College Group 6 p.m. Fridays</b>  <b>For more information see website or</b>  <b>contact Pastor Gam</b></p>

## Spring Harbor Sustainable Greenhouse Project – May 2012 Update

Over the last four months, a great deal of additional progress has been made on the greenhouse project. Take a look at some of the latest details!

### Background

Over the past two years, Spring Harbor Environmental Science Middle School has been the recipient of numerous grants and donations (now totaling over \$25,000) to construct a sustainable greenhouse on the school grounds that will allow students to grow native plants for restoration projects throughout Dane County. The building will also be used as an outdoor classroom and for growing fruits and vegetables for their gardens. In the near future, the greenhouse is expected to become the cornerstone of an on-going, community gardening and learning facility that offers summer gardening and science camps for kids, garden space for local residents and opportunities for multi-generational learning.

The structure's design will incorporate the principles of permaculture. The building will be in harmony with the environment and not increase demand for fuel, electricity and water. The design will utilize a biomass heating system, rain barrels to collect water, and straw clay construction to create a highly insulated building. The site will use photovoltaic panels to generate electricity that will offset the power needs of the building. Outside there will be a cob oven to help heat the structure and cook foods with ingredients from the garden.

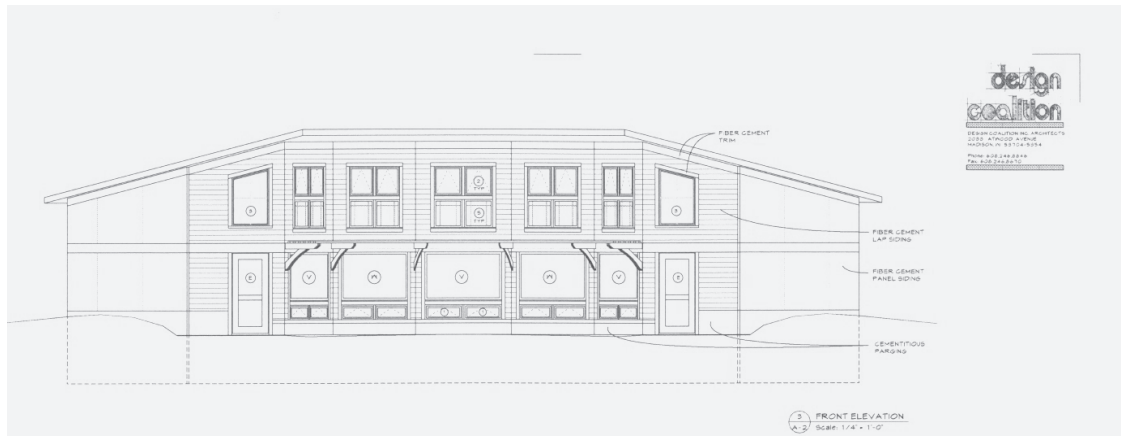
### Engineering Plans

The Design Coalition of Madison provided completed blueprints and structural engineering plans that have been submitted and approved by the city. In taking our initial design and turning it into a document suitable for construction, we had to make some key decisions about materials, design elements and building methods. We have decided that the final structure will use straw-clay walls, rather than straw-bale, to prevent any potential damage from water infiltration and to allow us to build in stages, rather than in a very short time.



### Publicity

John Ropa, father of the project leader, offered his writing services to help promote the project. He submitted and had



Structural engineering plans are now approved by the City of Madison!

published an article in the March issue of Sustainable Times, with a circulation of 6,000 throughout Dane County. The full-page, four color article had an equivalent advertising value of over \$1,000.

We will need to publicize a ground-breaking ceremony once we have a date scheduled. We plan to invite all past donors, the MMSD school board, superintendents, students, families, contractors and neighbors.

(Continued on page 6)

*(Greenhouse Project continued from page 5)*

We would like to include all interested parties in planning the phases of construction and the solicitation of contractors for bids on a variety of building elements. We need to get bids on excavation, timber framing, foundation, roofing, exterior framing, plumbing and electric. We need three competitive bids for each of these items so we would like to create teams to take responsibility for one or more items. A meeting will be scheduled for early June.

#### Materials Donations

Spring Harbor families continue to make donations of materials. We have received hundreds of brick pavers that will be used on paths within and outside the greenhouse and dozens of 2 x 4's and 2 x 12's that will be used in framing concrete, framing windows, building raised beds and in the construction of the exterior walls.

#### Financial Support

Donations continue to come in for the greenhouse. In the past four months, donations of over \$1,000 were received. In addition, we hope to apply to the PTSO for additional funds from this year's Spring-a-thon fund raiser.

#### Fund Raising

Once we break ground, we hope to use the publicity to identify potential financial backers, including foundations or organizations who would like to have the naming rights to the building and gardens. We encourage families and friends of Spring Harbor to introduce the project leaders to potential donors. We would be delighted to come to the offices of corporate or private donors to speak about the project and discuss ways to promote the generosity of those individuals or organizations.

#### Project Needs

We need to do the following tasks in the next four months:

1. Obtain Bids for:

Excavation	Foundation
Electric	Plumbing
Timber framing	Roofing
Exterior Construction	
2. Schedule excavation and pouring of foundation
3. Host 4-week summer gardening camp
4. Expand gardens and install hoop house

#### How can you help?

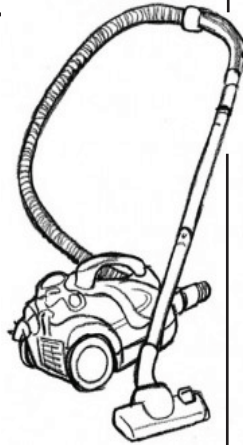
- Find lightly used building materials that can be donated to our project, including: conduit, timbers, wood, rock, gravel, sand, solar panels, brick pavers, windows, doors, lighting fixtures, ceiling fans, and much more)
- Make a tax deductible donation to the PTSO and have the money earmarked for the greenhouse project.
- Come to the next Greenhouse Planning Meeting in June to discuss particular ways to get involved.
- Contact potential donors
- Help identify contractors who would be willing to work on our project.

## Donating Furniture to Madison Friends of International Students

Usable furniture for basic functions like sleeping, studying, or storing are very much in demand by international students. Some rental rooms and most apartments are not furnished, and a student coming from overseas can hardly bring furniture along, nor is it economical to buy for a 6 months to 3 year stay.

### Wanted are

1. Desks, tables, chairs, beds, shelves, dressers, and lamps.
2. Also small appliances like microwaves, coffee makers, vacuum cleaners.
3. Sofas, easy chairs, recliners only if they are small and light and still in fair shape.



### Maybe Wanted

1. Dishes, silverware, and kitchen tools.
2. Ironing boards, mirrors.
3. Bedding materials, towels, pillows etc. are seldom taken.
4. Convert-a-beds/sleeper sofas (because of their weight) only if they can be delivered directly to the students' apartment.

Mike vonS, 608/233-3051, vons@aae.wisc.edu, keeps a list of such possible donations and will try to match the donor with a student.

### Not Wanted

1. Big and heavy sofas, decorative/artsy but worn furniture, and bulbous lamps with wide shades are NOT in demand.
2. Children's furniture, computer CRT monitors, TVs are SELDOM wanted. Stoves, fridges, washers, and other 'white goods' are NOT needed.

### Where to Deliver Donation:

Take your donation to the garage behind the Dale Heights Presbyterian Church, 5501 University Ave, Madison, WI 53705. No telephone. Enter Norman Way between the Church and the BP gas station.

### When to Deliver Donations:

- The first Saturday of a month from 11:30 AM-

12:30 PM, EXCEPT during December, January, June and July.

- Open ALSO the last 2 Saturdays of August and the first Saturday in September, 9 AM-12:30 PM.

If you cannot wait for the next open Saturday or need a pickup set up an appointment with Mike vonS, 608/233-3051, vons@aae.wisc.edu. If you can move your donation from your car into the garage by yourself, Giovanna Jeffries, 238-1991, italink@att.net may would be able meet you at the garage. We can give you a receipt for your tax deductible donation.

### Dane County Board Report—District 10 Supervisor Jeremy Levin

I hope this edition of the SHNA newsletter finds you well. Since my last article I have been reappointed to the County's Health and Human Needs (HHN) committee and I will continue to serve as vice-chair. I value my role on HHN, as the county spends more than half of its budget on human services for residents in need.

Recently, Dane County was awarded state and federal funds to create a new Aging and Disability Resource Center (ADRC). It will be a one-stop shop providing services and information for individuals and their families/caregivers. The ADRC will assist people, free of charge, in identifying their needs and determining what resources exist in Dane County to best serve them. The ADRC should create approximately 45 new jobs. Plans are to open in the fall at a location on the Northside of Madison.



The County has been selected to host the 2015 Wisconsin Farm Technology Days. The three-day annual event is the largest agricultural show in Wisconsin and is estimated to bring in \$1.8 million to the county. We are

the most productive agricultural county in the state, and farms comprise almost 70% of Dane County land. This will be a great opportunity to showcase our farmers.

As always, please feel free to contact me at levin.jeremy@co.dane.wi.us or call me at 608.577.9335 with specific questions and concerns.



Join or renew your membership in **Spring Harbor Neighborhood Association**. Please fill out the form below to join SHNA or renew your membership and mail it to SHNA Treasurer, Bill Fitzpatrick, 5156 Spring Court, Madison, 53705. Dues are \$10.00 per household; please consider a donation as well.

**Please make checks out to SHNA**

Membership Dues \$ \_\_\_\_\_  
 Donation, unrestricted \$ \_\_\_\_\_  
 Donation, neighborhood parks \$ \_\_\_\_\_  
**TOTAL ENCLOSED \$ \_\_\_\_\_**

Name \_\_\_\_\_  
 Address \_\_\_\_\_  
 Phone \_\_\_\_\_ email \_\_\_\_\_

The work of the SHNA is done through committees; help SHNA serve our neighborhood. Please check your interests.

- July 4th Picnic and Parade \_\_\_\_\_
- Help with Halloween Party \_\_\_\_\_
- Serve on Board of Directors \_\_\_\_\_
- Deliver SHNA newsletter 3x a year \_\_\_\_\_
- Clean Up Day and garlic mustard pull \_\_\_\_\_
- Serve on a SHNA committee \_\_\_\_\_
  - Historic Preservation \_\_\_\_\_
  - Natural Resources \_\_\_\_\_
  - Transportation \_\_\_\_\_
  - Zoning and Redevelopment \_\_\_\_\_