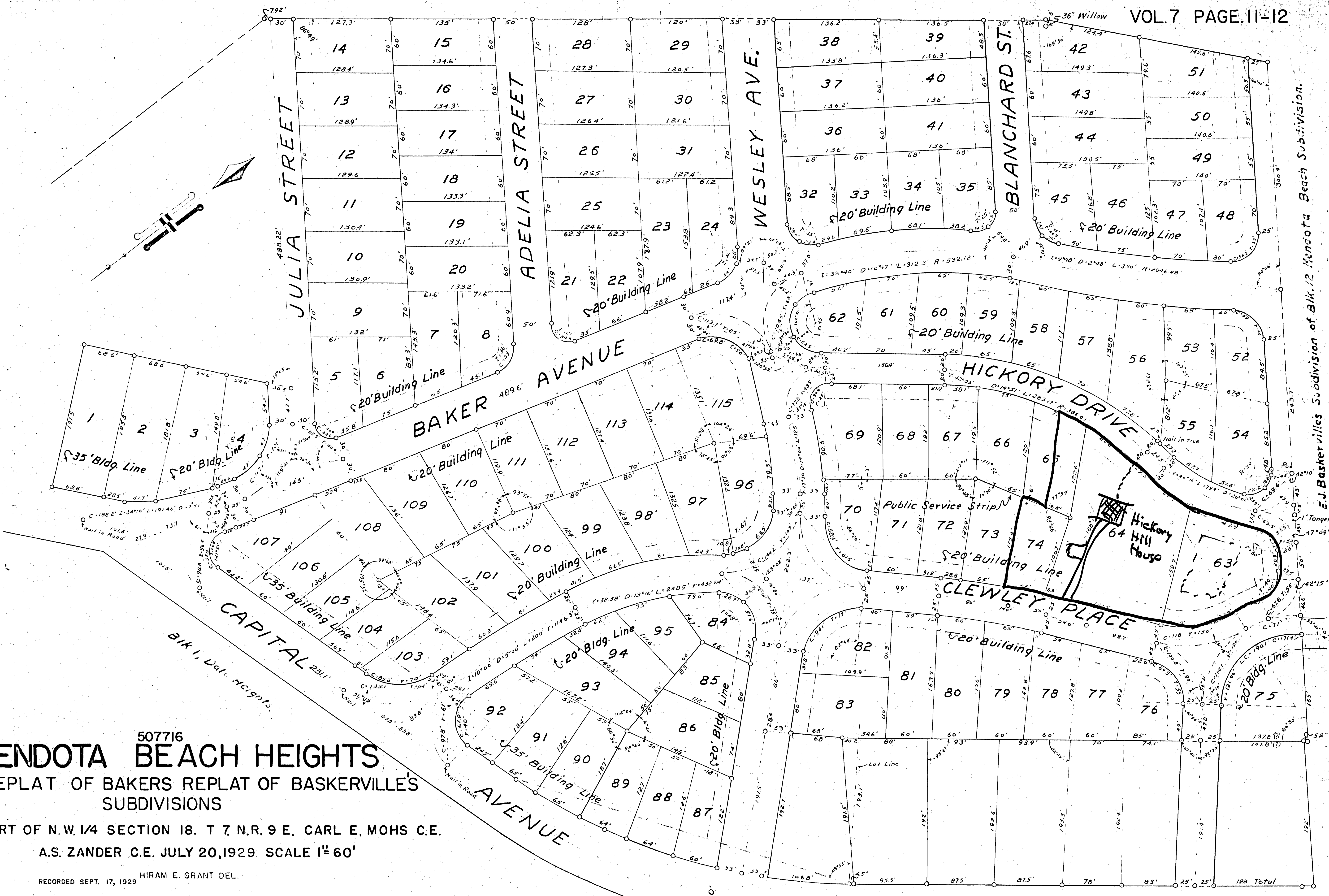


Carl E. Mohs, Surveyor.

Copied by Geo. Swacina



E. J. Baskerville's Subdivision of Blk. 12 Mendota Beach Subdivision.

MENDOTA BEACH HEIGHTS

REPLAT OF BAKERS REPLAT OF BASKERVILLE'S SUBDIVISIONS

PART OF N.W. 1/4 SECTION 18. T 7. N.R. 9 E. CARL E. MOHS C.E.
A.S. ZANDER C.E. JULY 20, 1929. SCALE 1"=60'

RECORDED SEPT. 17, 1929 HIRAM E. GRANT DEL.

Mendota Beach Subdivision