

213041  
PLAT OF

# MENDOTA BEACH SUBDIVISION

BY W.H. JACOBS

BEING A PART OF THE S.W. 1/4 OF N.W. 1/4

U.S. LOTS 1 & 2 SEC. 18 T. 7. N. R. 9. E.

DANE CO WIS.

L.S. SMITH SURVEYOR

OCT. 30. 1896

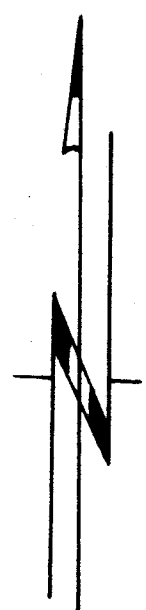
RECORDED NOV. 4, 1896

SCALE 50 0 50 100 150 200 250 300 350 FT.

I, L.S. SMITH DO HEREBY CERTIFY THAT BY THE DIRECTION OF W.H. JACOBS, I HAVE MADE A SURVEY AND PLAT OF THE FOLLOWING DESCRIBED LAND IN SEC. 18 T. 7. N. R. 9. E. DANE CO. WIS. DESCRIBED AS FOLLOWS TO WIT. BEGINNING AT A POINT ON THE RANGE LINE BETWEEN THE TOWNSHIPS OF MIDDLETON & MADISON DISTANCE 25.88 CHAINS S. OF N.W. CORNER OF SEC. 18 T. 7. N. R. 9. E. THENCE N. 35° 30' E. 15.36 CHAINS. THENCE N. 46° E. 82.0 CHS. THENCE N. 55° E. 10 CHS. TO SHORE OF LAKE MENDOTA THENCE S AND E. ALONG THE SHORE OF SAID LAKE 50.20 CHS. MORE OR LESS TO THE INTERSECTION WITH THE S. LINE OF U.S. LOT 2, SEC. 18. THENCE S. 87° 35' W. ALONG SAID SOUTHERN LINE 18.30 CHS. TO CENTER OF SEC. 18. THENCE S. 87° 30' W. 34.65 CHS. TO E. SIDE OF MADISON & MIDDLETON PUBLIC ROAD THENCE NORTHWESTERLY 3.01 CHS. ALONG SAID E. LINE OF ROAD TO RANGE LINE. THENCE N. ON RANGE LINE 11.15 CHS. TO PLACE OF BEGINNING. I ALSO CERTIFY THAT THIS MAP IS A CORRECT REPRESENTATION OF ALL THE EXTERIOR BOUNDARIES OF THE LAND SURVEYED AND THE SUBDIVISIONS THEREOF MADE.

L.S. SMITH U.S. DEPUTY SURVEYOR  
Copied By R G Graves  
Checked By Ed Daitelhoff  
Virginia Bruckelmeier

IRON STAKE  
N.W. CORNER OF SEC 18



25.88 CHS.

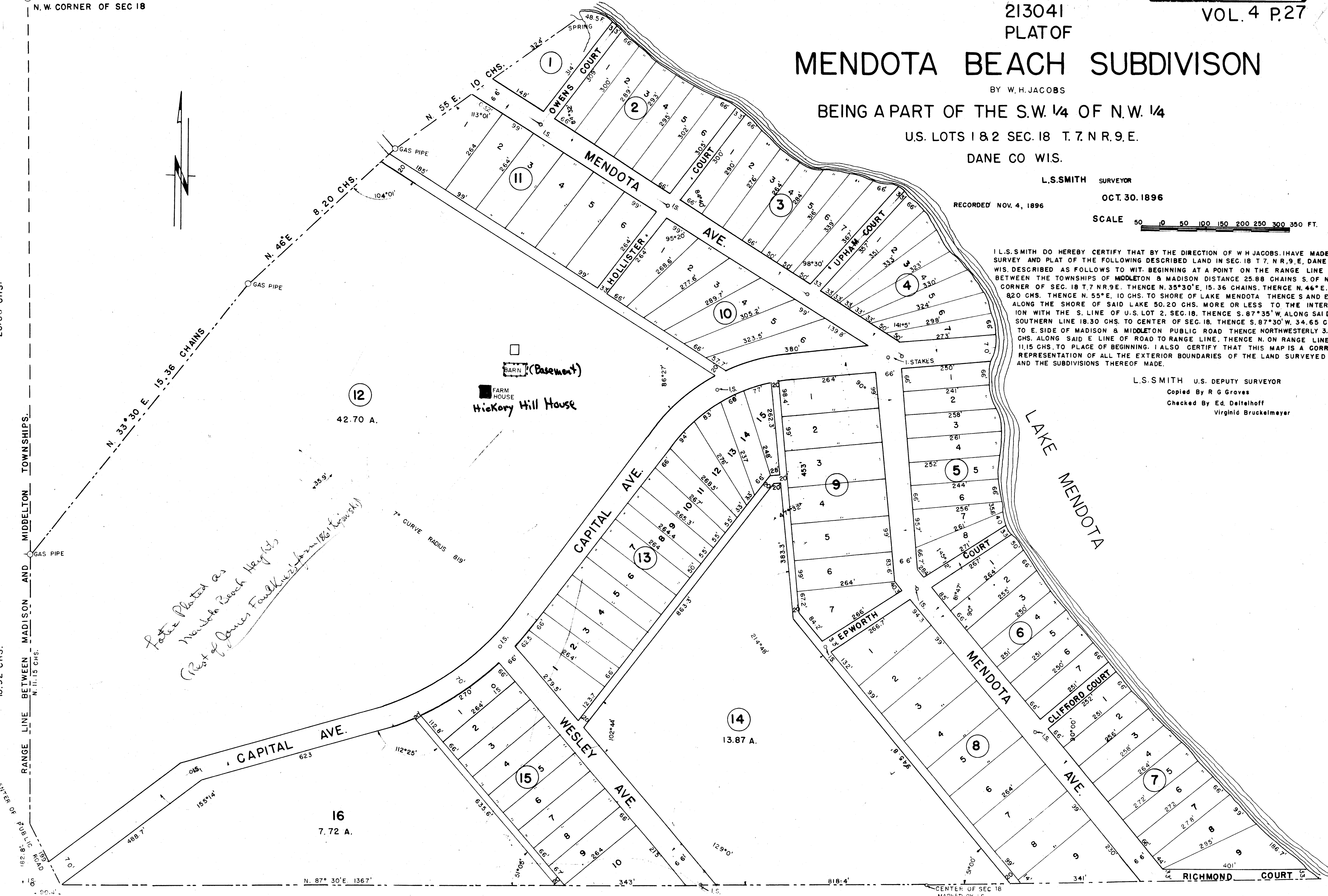
RANGE LINE BETWEEN MADISON AND MIDDLETON TOWNSHIPS.

13.92 CHS.

CENTER OF PUBLIC ROAD

N. 87° 30' E. 1367'

CENTER OF SEC 18  
MARKED BY I.S.



*Notes Platted as  
Mendota Beach Hwy (lots)  
(Rest of Jones Faulkner farm 1861 (Kopinsky))*

BARN (Basement)  
FARM HOUSE  
Hickory Hill House

7° CURVE RADIUS 819'

12  
42.70 A.

14  
13.87 A.

16  
7.72 A.

RICHMOND COURT