

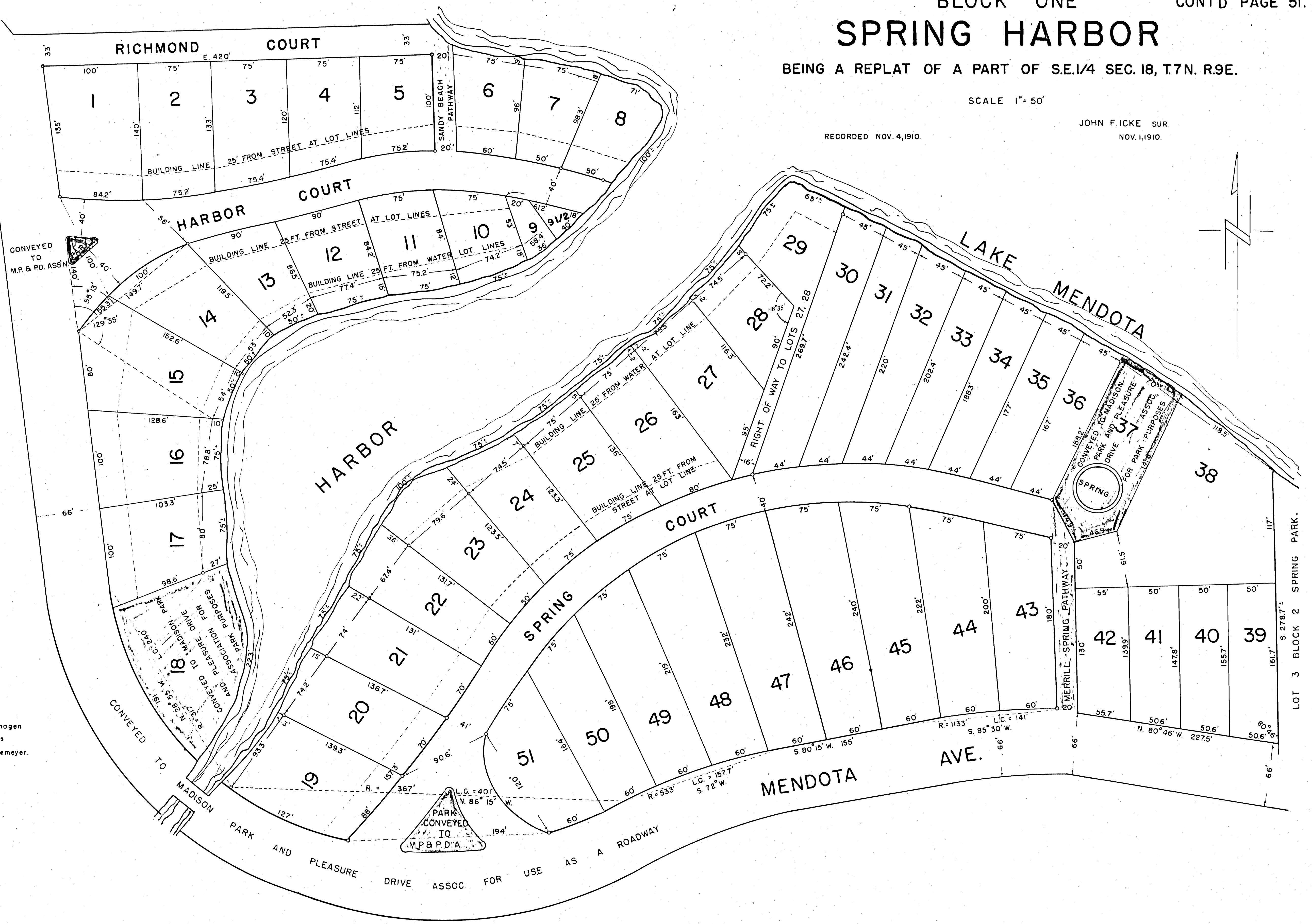
SPRING HARBOR

BEING A REPLAT OF A PART OF S.E.1/4 SEC. 18, T.7N. R.9E.

SCALE 1" = 50'

RECORDED NOV. 4, 1910.

JOHN F. ICKE SUR.
NOV. 1, 1910.



Copied by Geo.W.Bernhagen
Checked by R.G.Graves
V.B.Brucklemeyer.

LOT 3 BLOCK 2 SPRING PARK.